

How to install Repute 2



Geocentrix Ltd

Scenic House
54 Wilmot Way
Banstead
Surrey
SM7 2PY
United Kingdom

www.geocentrix.co.uk
mail@geocentrix.co.uk
Tel: +44 (0)1737 373963
Fax: +44 (0)1737 373980

Managing Director
Andrew Bond
MA MSc PhD DIC MICE CEng
andrew.bond@
geocentrix.co.uk

Registered office
as above

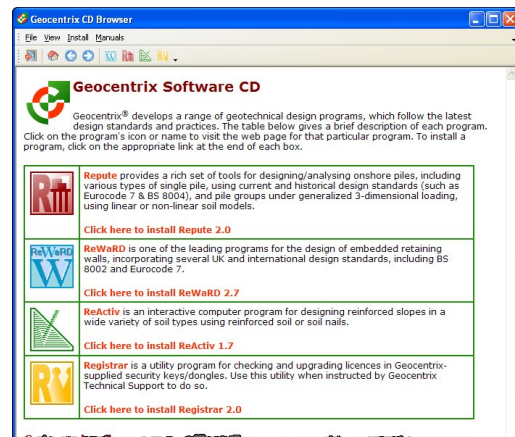
Registered in England
No. 3738829

VAT Registration No
GB 709 3785 07

Geocentrix is a registered
trademark of Geocentrix Ltd

1. Connect the supplied security key to your computer's USB port.

2. Place the Geocentrix Software CD in your CD-ROM drive. The Browser should automatically appear (if not, run **SETUP.EXE** from the CD's root folder).



3. Click on the link "**Click here to install Repute 2**" to run the Repute setup program.

4. When asked "Do you want to run or save this file?" click **Run**. If a security warning appears, click **Run**.

5. When the welcome screen appears, read the instructions and click **Next**.

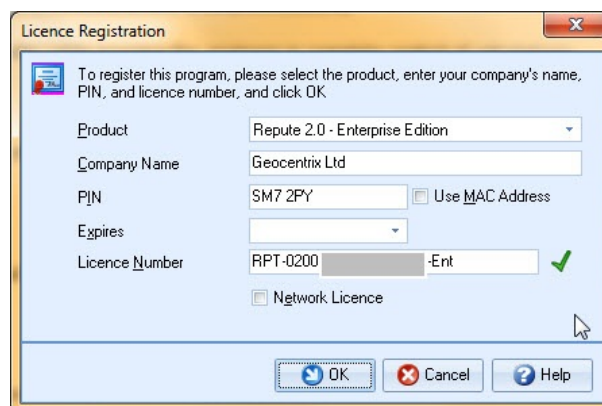
6. Read and accept the license agreement and click **Next**.

7. Read the program's 'readme' file and click **Next**.

8. Select which features to install, choose the installation path, and click **Next**.

9. Click **Next** to install the application and **Finish** when setup is complete.

10. When Repute first runs, you will be prompted to register the program. Enter your licence details (product, company name, PIN, and licence number) exactly as given on the label attached to the security key. Tick the Network Licence box if your security key is read. Leave the Expires box unticked. Finally, click **OK**.



To learn how to use the program, please follow Tutorials 1-6 in the program's *Quick-Start Guide* (available in Adobe PDF format from **Start > All Programs > Geocentrix > Quick-Start Guides > Repute 2 Quick Start Guide**).